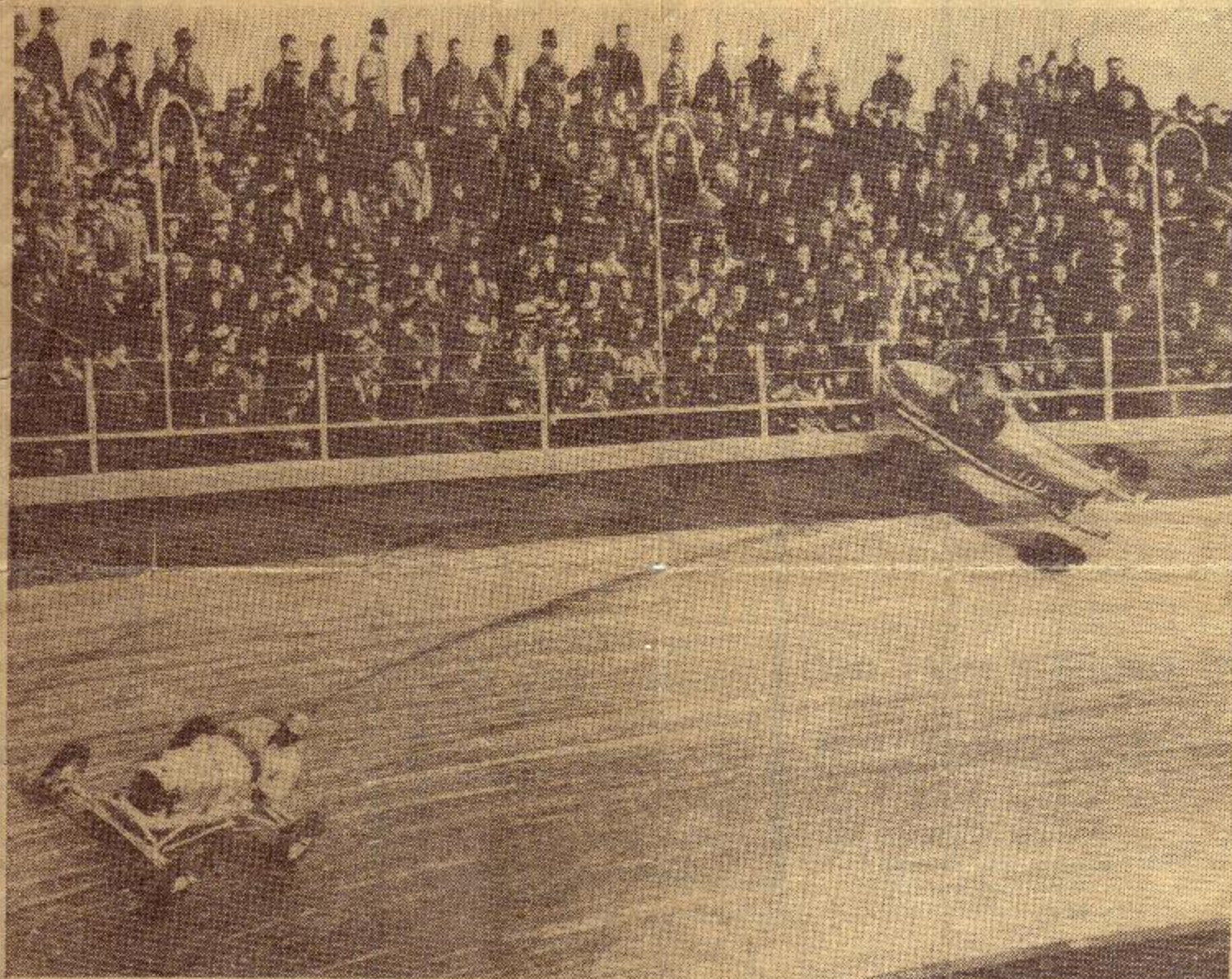


HEADED FOR A SPILL—AND THE SPECTATORS.



This was a split second of danger for driver and some watchers alike at a Nutley, N. J. speedway for miniature racing cars. At the upper right the car driven by Vern Orenduff, out of control, is about to climb the guard rail at the top of the track. The race watchers who were in jeopardy had not had time to leap for safety as the camera caught this scene. A fraction of a second later the little racing machine had turned over, injuring Orenduff. Persons in the crowd near by were fortunate to escape unharmed. Eleven spectators were injured when a car driven by Ken Fowler was involved in a different accident.