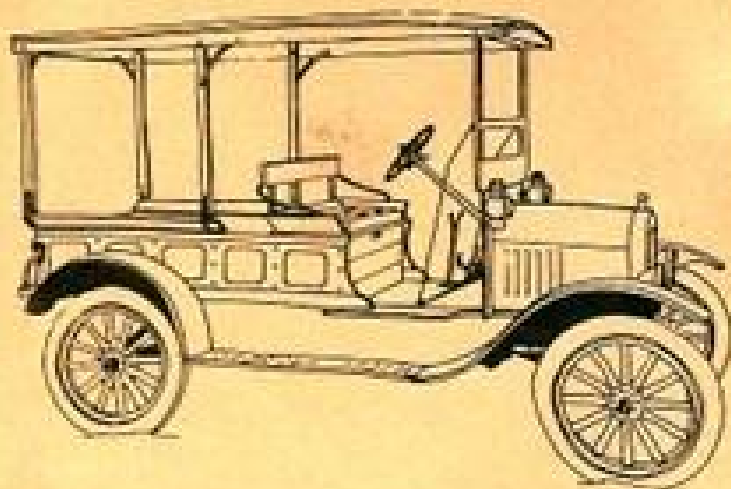


## SYVERSON CABINET COMPANY

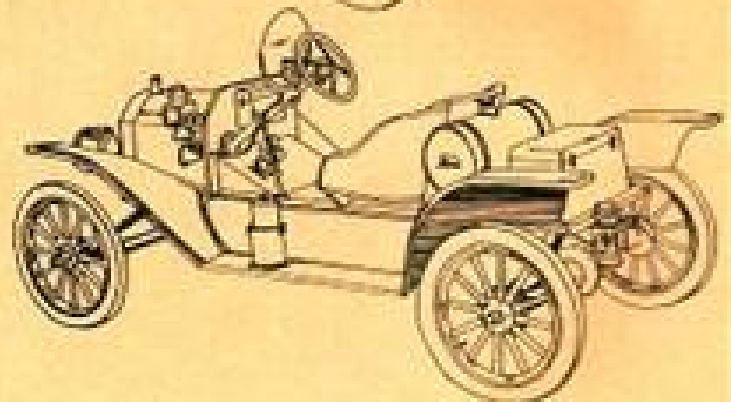
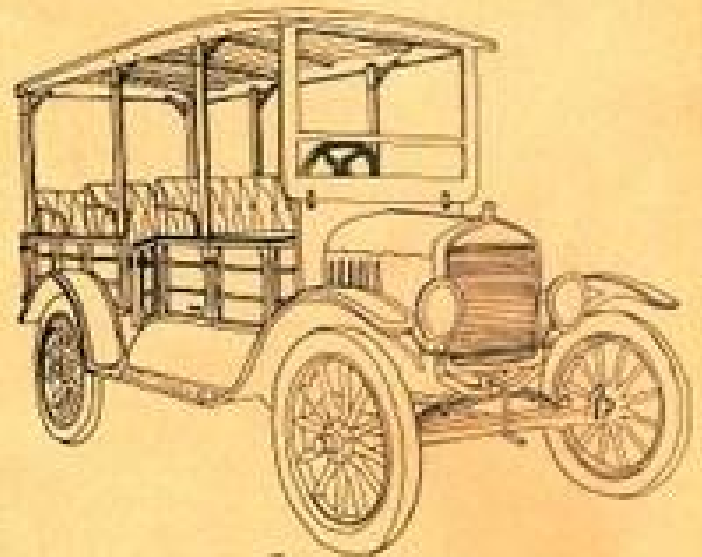
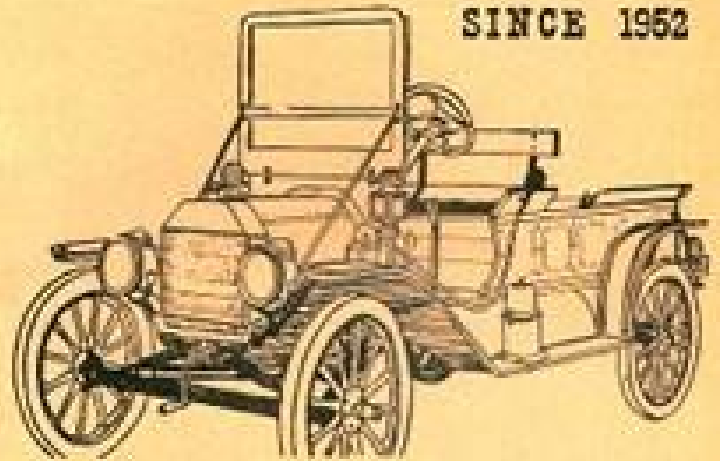
2301 RAND RD., P.O. BOX 243  
PALATINE, ILLINOIS 60067

SHOP PHONE: 358-8428  
EVENING PHONES: 438-5601  
490-2427



## WOOD PARTS THAT FIT TO A 'T'

SINCE 1952



PRINTING NUMBER 9

WE HAVE A SET OF FOUR 3 X 5 COLOR SNAPs WHICH ILLUSTRATE THESE FINE BODIES MUCH BETTER . . . . . \$1.00



COMMERCIAL EXPRESS



WAGON EXPRESS

**EXPRESS BODY SERIES:** We have built the delightful little express body with only minor changes, since 1955 . . . Built of solid white ash thruout, accentuated by iron hardware braces and strappings . . . . . Each version is authentically executed as to material, workmanship, design and construction . . . Furthermore, you can "add on" at any time, all parts are correlated, and this includes all of the express bodies we have built since 1955! . . . Shipped motor freight carefully crated, disassembled into component parts. A pleasure to put together, complete instructions are provided . . . Can be installed on any Model T Ford chassis 1909,27.



COURIER EXPRESS



CANOPY EXPRESS

#### EXPRESS WAGON (SERIES) SPECIFICATIONS

ENTIRELY BUILT OF SOLID WHITE ASH.

CANOPY OR CAB TOP . . . WHITE ASH APRONS BOWS, CONTOURED WITH CHAMFERED STRIP OF REDWOOD, COVERED WITH BLACK "LEATHERETTE" TOPPING.

HARDWARE . . . COLD ROLLED STEEL CASTING . . . DUCTILE IRON.

FRONT FLOORBOARDS . . . FIR PLYWOOD ( TO COVERED).

# WOOD PARTS THAT FIT TO A "T"

SYVERSON CABINET CO., 2301 RAND ROAD,

PALATINE, ILLINOIS 60067

PHONE: 312/358-8428

SINCE 1962

NOW YOU CAN INSTALL AN AUTHENTIC REPRODUCTION OF AN ORIGINAL WOODEN EXPRESS BODY ON YOUR MODEL T FORD CHASSIS.

WE HAVE BUILT this great little express body with only minor changes since 1955.. "MADE THE OLD WAY" of solid white ash thru out, with faithfully reproduced iron hardware and castings, it is authentically executed as to material, design, workmanship and construction.



EACH BODY is carefully crated partially disassembled into component parts, and shipped by motor freight to your door. it is not merely a kit but a complete unit including all the nuts and bolts just as in the old days. This little truck body is a pleasure to put together and can be either varnished or painted..Complete instructions are provided and it can be installed on any Model T Ford from 1909 to 1927.



A RE-PRINTED PAGE from the original catalog of the FORD BODY COMPANY of Greensboro North Carolina illustrating their body number 82 is included with each unit, thus providing positive proof of the authenticity of our express body, so the finished vehicle can be freely entered into various antique auto competitions.

(see other side)





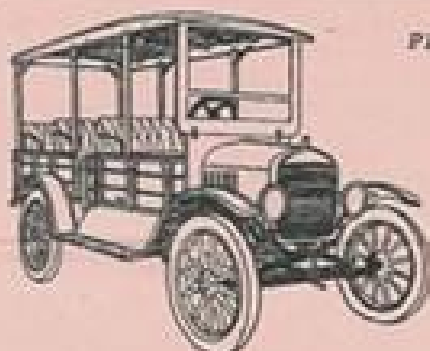


# WOOD PARTS THAT FIT TO A "T"

SYVERSON CABINET CO., 2301 RAND ROAD, PALATINE, ILLINOIS 60067

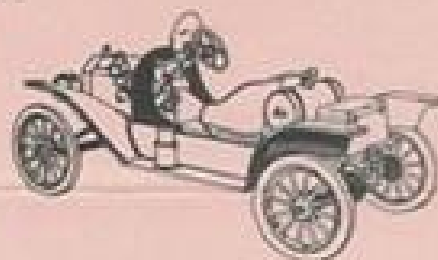
SHOP PHONE: 312/358-8428

Replacement bodies are grouped below with their related accessories and optional features, some of which are required on certain year chassis. The correct dashboard is included with each body.



## PRICE LIST

1962



### DEPOT HACK BODY

Built of solid white ash with mahogany plywood side planking. Has contoured canopy top with chamfered redwood strips, seats six people, has three passenger doors (one in front and two in back), armrests for all seats, and all necessary hardware. \$1785.00

Hood separator 16-27 Regd.	10.00
Special firewall 26-27 Regd.	25.00
Brass dash moulding	28.00
Wood switchboard	5.00
Windshield frame (non-opening)*	50.00
Windshield frame (tilt-open)*	160.00
Windshield safety glass	40.00
Upholstered seats and backrests (6-person capacity)*	350.00
Side curtains *	400.00
Rubber floor mat (frt. & rear)	30.00
Wood battery/toolbox	50.00
Rear fenders for depot hack	
09-16	@ 110.00
17-25	@ 130.00

Crating charge for depot hack 125.00

### DEPOT HACK PACKAGE inc:

Upholstered seats and backs, full side curtains, tilt-open windshield frame & glass, floormat, battery/toolbox. 2765.00

### SPEEDSTER BODY

Includes bucket seats, base assembly, cherry dash, embossed rear toolbox and tank saddles, oval FORD script fuel tank, seat base, floorboards & risers, and chassis lowering kit. \$395.00

### SPEEDSTER PACKAGE inc:

Speedster body plus brass dash moulding, brass tank neck, brass tank straps, running board tool or battery box, upholstered seats, and rubber floormat. \$720.00

Crating charge for speedster 50.00

### OPTIONAL ACCESSORIES

Special hoodformer 15-25 Regd.	18.00
Hood separator 16-25 Regd.	10.00
Brass dashboard moulding	28.00
Brass tank filler neck *	55.00
Brass tank straps & cushions *	30.00
Brass windshield monocle	75.00
Aluminum windshield monocle	40.00
Plexiglas for monocles	12.00
Cowl and dashboard unit 09-16 *	145.00
Upholstered bucket seats *	200.00
Rubber floormat	10.00
Wood battery/toolbox	50.00
Wood switchboard	5.00
Speedster fenders, straight or curved, set of four	430.00
Speedster splash aprons, pair	70.00
Speedster running boards, pair	70.00

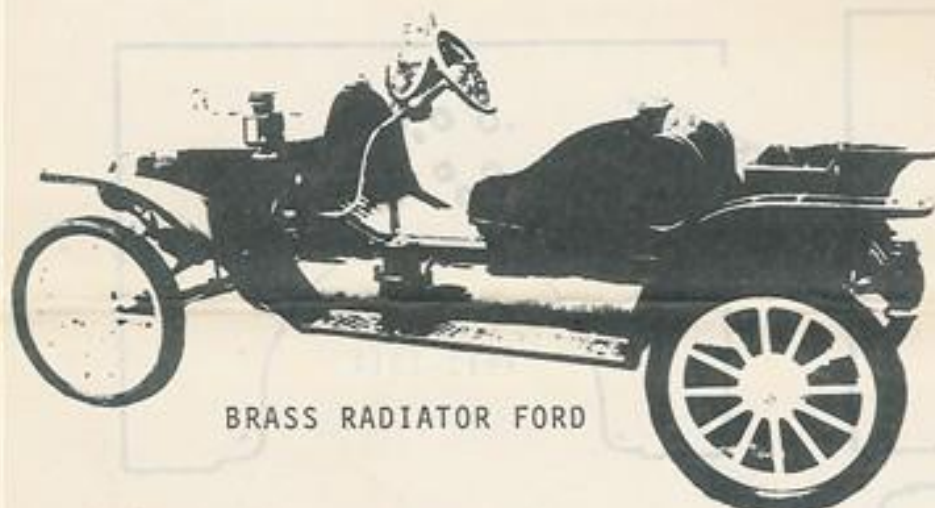
\* This item is available only when you order the replacement body.

# WOOD PARTS THAT FIT TO A "T"

SYVERSON CABINET COMPANY 2301 RAND ROAD

PALATINE, IL. 60067

Phone: 312/358-8428



BRASS RADIATOR FORD

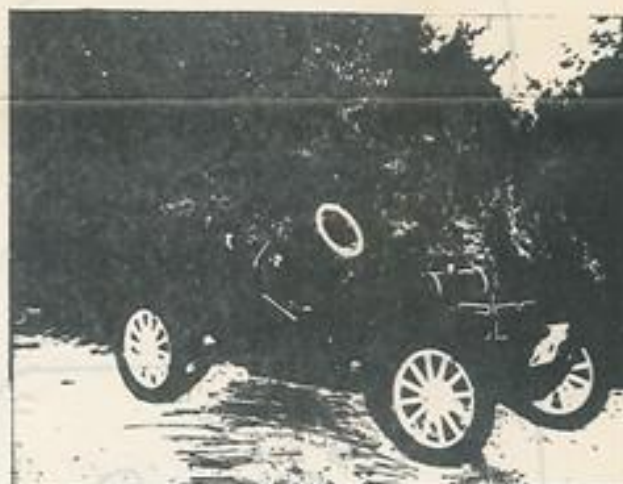
OUR SPEEDSTER BODY can only be described as a GEM!....This is a well designed body....Look it over.....It has a beautiful oval fuel tank with stamped convex Ford script ends and a big brass filler/cap plus heavy brass hold-down straps...The seats are the most comfortable you have ever sat in

and in perfect proportion....The embossed-sided rear tool box is just right for the car, and with its brass hardware adds the perfect touch. The brass radiator cowl is the true traditional speedster shape and size and an exact duplicate of an old original one.

We've built this speedster body for many years now and have continually refined it and added detail. This wood and steel body is unsurpassed at any price ----however it can be had for not a lot of money....It's easy to mount and no special equipment is necessary. The chassis can be readily lowered without mutilating it, with the lowering parts provided, but it doesn't have to be (the 1913 chassis shown is not lowered).

The body comes to you compactly crated, disassembled into component parts and shipped by motor freight right to your door. Full instructions for assembling and painting it are included as well as lowering instructions for the chassis.

For Fords from 1909 to 1925..The 1926-27 chassis can be used, fenders and all, by converting to an earlier type hood or even going to a brass radiator...We have all the modifications parts needed to put this body on your Model T Ford chassis.



BLACK RADIATOR FORD



# WOOD PARTS THAT FIT TO A "T"

SYVERSON CABINET CO., 2301 RAND ROAD, PALATINE, ILLINOIS 60067

SHOP PHONE: 312/358-8428



BRASS RADIATOR FORD

WE'VE BUILT this speedster body for many years now, and have continually refined and added detail to it. The classic open design is an overall favorite of speedster lovers and makes for a real eye catcher. Just imagine touring through the countryside in an open bodied speedster.

Everything is here to make your T chassis into something special, and it's so simple that even a kid can do it.

All the parts are designed to go together with a minimum amount of trouble, with simple instructions for assembly and finishing provided. The body fits on any model T chassis just like a glove, no special equipment is necessary. If you choose, you can easily lower the chassis with the lowering kit that is provided, but you don't have to, it looks great without it (the 1913 Ford shown above has not been lowered). All the parts that get painted are made of duraply or smooth pine, so you have nice smooth surfaces to finish, not like fir plywood. The bucket seats are made of steel, wrapped around a wood framework, and come all ready to be upholstered. We can even have them upholstered for you if you like. The body comes disassembled into it's component parts, carefully crated, and is shipped by truck right to your door. If you wish, you may pick it up right here at our shop by prior arrangement.

The body includes the following: a pre-drilled cherry dashboard, the base assembly, the floorboards and risers, a steering column wedge for lowering the steering column, an engine dash shield, two assembled bucket seats, the seat base assembly, an oval fuel tank with FORD script, tank support saddles, a rear toolbox with brass hardware, and a chassis lowering kit. Available accessories, some of which are included as part of a speedster package we have available, are as follows: a brass dashboard moulding, a brass tank filler neck, brass tank holddown straps and cushions, a brass or aluminum monocle windshield, upholstered seats, floormat, speedster style fenders, splash aprons and running boards, mahogany running board battery boxes, mahogany wood coilboxes and hoodsills.

THE SYVERSON T SPEEDSTER BODY

